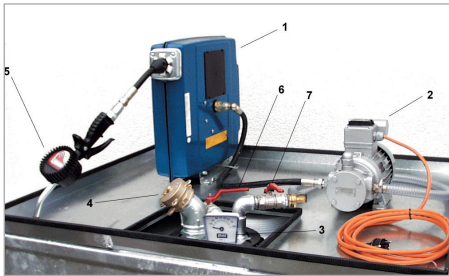


MOBICONT TYPE MO 800



Mobile oil supply for manufacturing, approval for storage and transport

- sturdy, conical outer container made of 3 mm steel sheet that protects inner container and provides 100% spill containment, including dipstick to test for leakage
- sturdy, changeable inner made of PE, with screw-on lid Ø 215 mm
- drip tray
- suitable for pick-up by a pallet truck, forklift or straddle stacker



- (1) encased hose retractor reel with 8 m hose DN 13
- (2) electric pump 230 V, cable with plug, including suction hose
- (3) level indicator for storage
- (4) 2" filling coupling
- (5) manual flow counter
- (6) 1" aeration/vent valve
- (7) 1" stopcock

Finish:

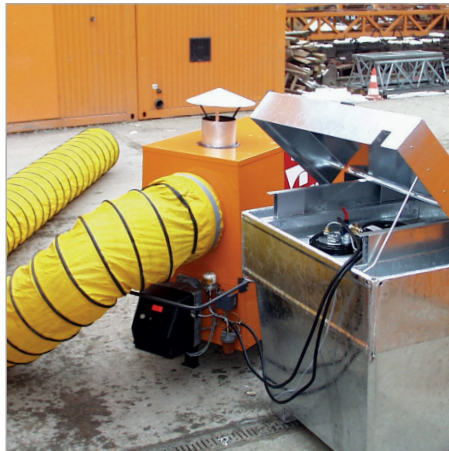
hot-dip galvanized

UN-APPROVALS

31HA1/Y/D/BAM 14263-BAUER/3344/

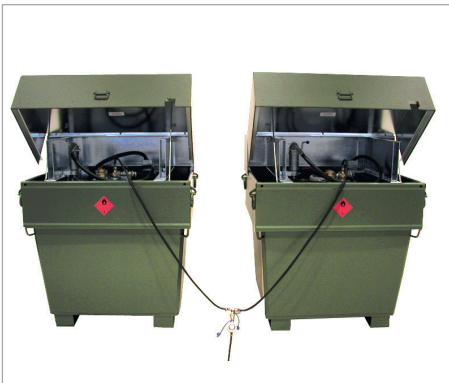
	Volume in l	Dimensions (l x w x h) in mm	Weight in kg paint. / galv.
MO 800	800	1200 x 1000 x 1635	251 / 276

MOBICONT TYPE MW 800

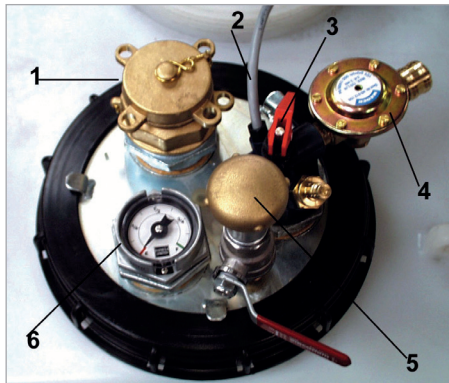


Heating fuel supply for hot air heaters, both indoors and outdoors

- sturdy, conical outer container made of 3 mm steel sheet that protects inner container and provides 100% spill containment, including dipstick to test for leakage
- sturdy, changeable inner tank made of PE
- filling/extraction lid with 2 x 2", 1 x 1/2" and 1 x 3/4" thread
- suitable for pick-up by a pallet truck, forklift or crane
- galvanized lid, lockable, with stacking corners and lid support - covers the containment sump
- square lock or cylinder lock



MW as "twin tank system" for additional capacity (individual construction)



Accessories

- tank heating (with expertise issued by the German "TÜV")
- filling/extraction lid with fittings such as
 - (1) filling coupling
 - (2) tank heating
 - (3) Euroflex 3 - tank fitting
 - (4) anti-siphon valve
 - (5) aeration/vent valve
 - (6) level indicator

	Volume in l	Dimensions (l x w x h) in mm	Can be stacked	Weight in kg paint. / galv.
MW 800	800	1285 x 1015 x 1310	3 high	271 / 286

UN-APPROVALS

31HA1/Y/D/BAM 14263-BAUER/3344/

Finish:

RAL 2000

RAL 3000

RAL 5012

RAL 6011

RAL 7005

hot-dip galvanized