

# SUMP TRAYS FOR SKIPS TYPE CW



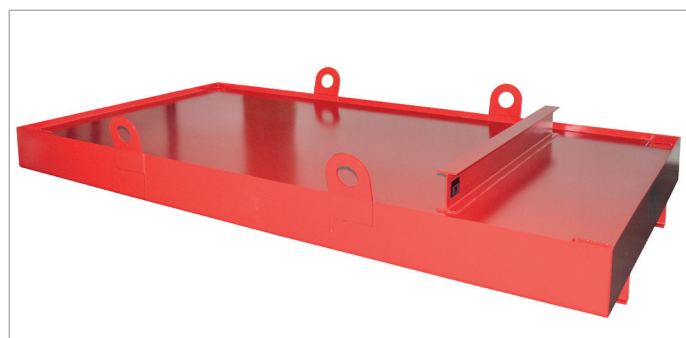
For use with skips filled with waste contaminated with emulsions, cooling lubricants, oils etc. Can be used indoors or under cover.

- for skips compliant with DIN 30720 up to 10 m<sup>3</sup>
- sturdy steel construction
- covered tray to avoid further contamination of any liquid
- 4 suction openings, protected by a removable sieve; fill level can be seen through the openings so they also function as a level indicator
- 5° inclined surface area
- crane eyes for use with crane
- easy to clean

**Individual construction on request**



CW 1



CW 3



Suction opening and level indicator

	Dimensions in mm (l x w x h)	Retention capacity in l	Surface load in kg	Weight in kg
<b>CW 1</b>	2300 x 2030 x 560	850	20000	558
<b>CW 2</b>	2800 x 2030 x 560	1036	20000	663
<b>CW 3</b>	3300 x 2030 x 560	1222	20000	767



- every unit tested for leakage
- flammable liquids, GHS categories 1 - 3
- hazardous to aquatic environment, GHS categories 1 - 4

Finish:

RAL 2000

RAL 3000

RAL 5012

RAL 6011

RAL 7005