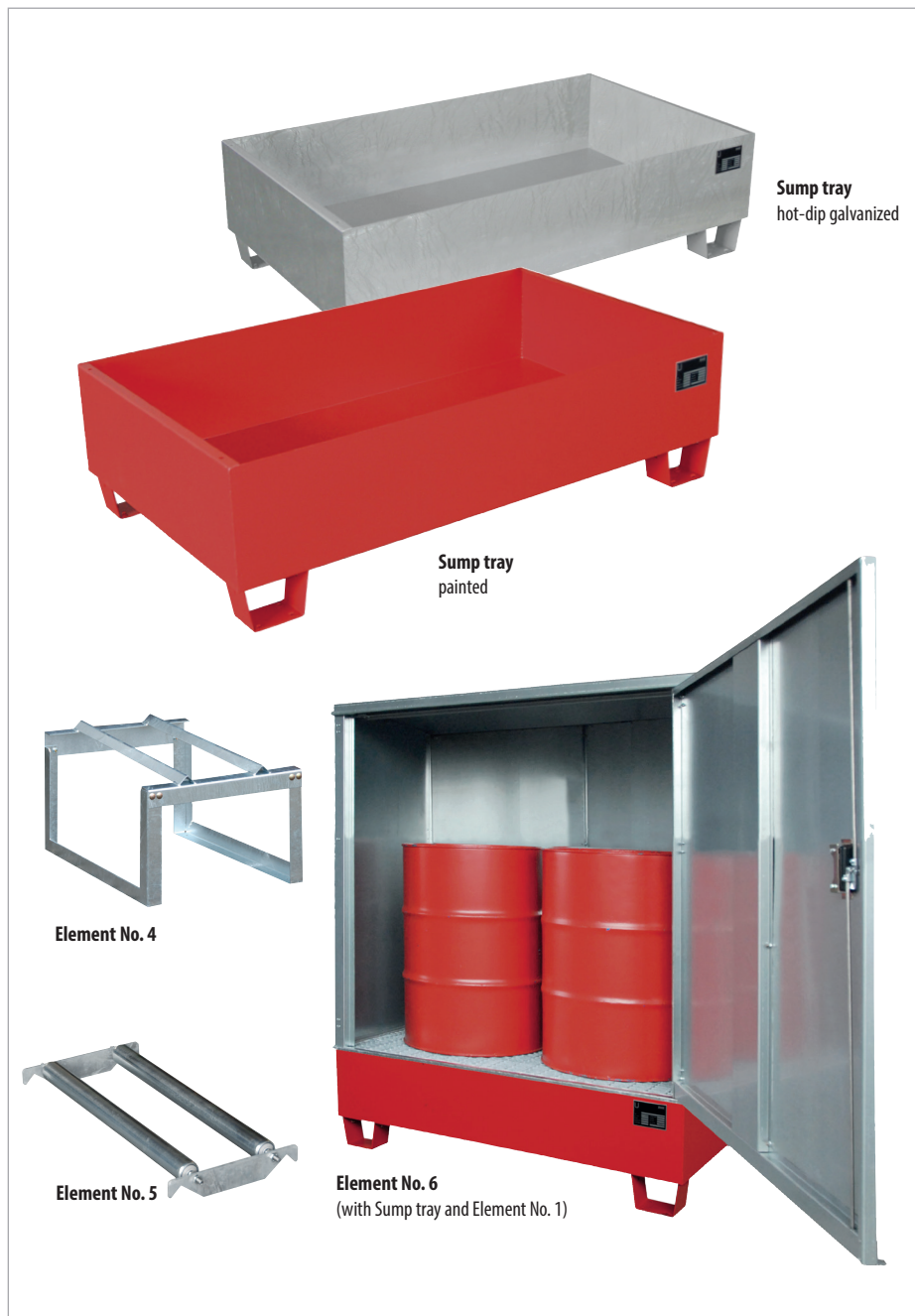


# MODULAR SUMP TRAYS TYPE MAW



Sump tray  
hot-dip galvanized

Sump tray  
painted

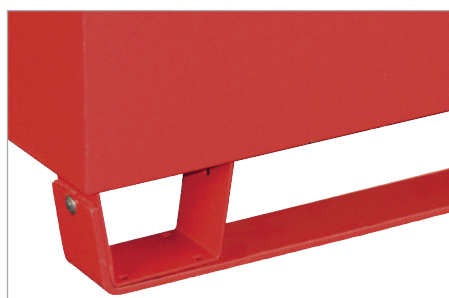
Element No. 4

Element No. 5

Element No. 6  
(with Sump tray and Element No. 1)



Element No. 1



Element No. 3

Storage of max. 2 x 200 litre drums or 200 l drums in combination with 60 litre drums and/or canisters and small cans

Modular design, choose from:

- **Sump tray**  
construction made of 3 mm steel sheet, 100 mm ground leeway, retention capacity 242 litres
- **Element No. 1**  
grid including supports (load capacity 1000 kg/m<sup>2</sup>)
- **Element No. 2**  
2 swivel + 2 fixed polyamide castors Ø 100 mm, one swivel castor with brake; construction height 125 mm, handle galvanized
- **Element No. 3**  
2 runners
- **Element No. 4**  
Drum Support FA 200-1 for horizontal storage of 1 x 200 litre drum, in kit form
- **Element No. 5**  
Clip-on Rotating Support RA 200 for rotating the drums

- every unit tested for leakage
- flammable liquids, GHS categories 1 - 3
- hazardous to aquatic environment, GHS categories 1 - 4

- **Element No. 6**  
surround with a door that can be locked

- every unit tested for leakage
- liquids with a flashpoint > 55° C
- hazardous to aquatic environment, GHS categories 1 - 4



Sump tray with Element No. 2

	Dimensions (l x w x h) in mm	Weight in kg paint. / galv.
MAW Sump tray	1295 x 735 x 365	50 / 54
Element No. 1 grid including supports	715 x 1230 x 30	- / 19
Element No. 2 galvanized handle + castors	635 x 60 x 950	- / 7
Element No. 3 runners	1275 x 80 x 95	14 / 15
Element No. 4 galvanized Drum Support FA 200-1	540 x 775 x 445	- / 13
Element No. 5 galvanized Clip-on Rotating Support RA 200	320 x 720 x 75	- / 7
Element No. 6 galvanized surround	1295 x 740 x 1450	- / 91